

From the Chairman...

Welcome to our first ever spring newsletter – to update you all on what is taking place in the 2013 EMiB campaign, who is involved, who the judges are and any other recent information and changes that I can think of!

First off, congratulations on taking part! This year we have Five new participants – Bracebridge Heath, Alford, Little Cawthorpe Parish Council, Messingham, Richmond Village and Southwell. Returning after a short break are Kirton-in-Lindsey and Milford. So we have 56 participants – our best ever level of engagement in the campaign.

In addition, It's Your Neighbourhood continues to grow, with over 140 taking part this year (124 in 2012).

A very warm welcome to all new 'Bloomers' and we hope that you will enjoy your first experience in Bloom, and that this will be the beginning of a long and happy time with us. Our many long-standing entrants – and more recent converts – find the Bloom to be a rewarding experience, and many, in the course of time, may go on to represent our Region in the national RHS Britain in Bloom campaign.

On page 2 are listed all the 2013 'main bloom' entrants in their categories, together with the expected judging teams, all of whom are looking forward to visiting your communities in the first fortnight of July.

There are far too many IYN groups to list individually here, but I have indicated the numbers that have registered from the main cities and towns/districts in the region. Assessments of these groups and their activities – examples of grass-roots community action at its best – will take place throughout July.

At this stage we are still receiving entries for special awards and for the Best School Garden; as usual 'specials' are judged during 'Bloom' judging – but please ensure that Irene has been made aware that you are entering specials to allow the judges time to get round your community without need for a rush. Schools are judged separately, and Rupert Atkinson and his team will contact each school individually to arrange that. Don't forget, though, that a school is also a very valuable addition to the main bloom judging, showing as it does good engagement with children.

At the time of writing, we have emerged from a long and fairly grey, cold early April to what is now a warm and sunny – if late – spring; let's hope that this will be followed by a 'balanced' summer with no droughts and – please...- not the deluge that 2012 provided.

It has been heartening to hear from at least one 'regular' entrant who is having a year off this year, but is using the time to develop major projects ready for 2014; they are already looking forward to next year's Bloom campaign.

Our National RHS Britain in Bloom entrants will, we hope, have a great year; your judges will give you some immediate feedback (though not the result!) after your EMiB judging, which you can use to 'tweak' your route or presentation and so get the most from your day with the RHS judges in August.

One of our newest Bloom groups (Barton in Fabis) are, of course, in the National Finals this year, and have had an advisory visit from Irene and me in the autumn, and then a detailed support visit from EMiB Vice-Chairman Sharon Thomas in April, to help them show of their best on the day.

We have added to the judging team with four new designate judges this year, all of whom will be on 'light duties' to get experience from senior judges – so please make Robin Allan, Diane Moore, Jo Hull and Andy Chambers most welcome if they visit you. It is also great to welcome back Alan Fletcher to the judging team, bringing, as he does, all the experience and knowledge from working as an integral part of the successful Bloom entries at Cleethorpes, Grimsby and Immingham.

Our partners and sponsors are essential to our ability to run East Midlands in Bloom, and the Sponsorship sub-committee, ably led by Peter Benham, have worked tremendously hard to add new supporters to our cause. So, a warm EMiB welcome to new Bronze supporters Moles Seeds, Western Power Distribution and Taylors Bulbs, and continued thanks to Silver Sponsors Amberol and Plantscape. Barcham Trees, DART Training, The Art Department and Naylor's Flower Bulbs continue to provide invaluable support.

Jeff Bates,

Chairman,
East Midlands in Bloom

EMiB entrants 2013 – by category and with expected judging teams

Small Village: Barton in Fabis, Elmton, Little Cawthorpe Parish Council, Richmond Village, St Crispin Village, Ranby – judges Ian Cooke, Richard Adams

Village: Burgh-le-Marsh, Lark Hill Village, Middleton-by-Wirksworth, Rosliston – judges Jo Tarrant, Doug Stacey

Large Village: Caistor, Donington, Kirton-in-Lindsey, Market Bosworth, Milford – judges Chris Beal, Alan Fletcher

Small Town: Alford Town, Bakewell, Blidworth, Bracebridge Heath, Crowland, Darley Dale, Holbeach, Long Sutton, Messingham Village, Uppingham – judges John Simpson, Jeff Bates, Jo Hull

Town: Bourne, Burbage, Immingham, Oakham, Southwell, Staveley, Syston – judges Dave Bramwell Sharon Thomas

Large Town: Belper, Boston, Gainsborough, Ilkeston, Long Eaton, Louth, Market Harborough, Melton Mowbray, Newark, Sleaford, Spalding – judges Richard Stephen, Robin Allan, Diane Moore

Small City: Chesterfield, Grimsby, Loughborough, Oadby & Wigston – judges Martin Hardy, Chris Beal

City: Mansfield, Northampton – judges Peter Benham, Simon Lucas

Large City: Nottingham – judges Peter Benham, Alan Fletcher

Urban Community: Evington in Bloom, Littleover in Bloom, Meadows in Bloom – judges Ian Cooke, Richard Adams

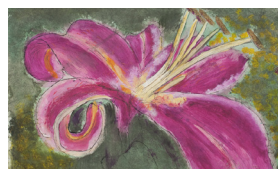
Coastal: Cleethorpes, Mablethorpe, Skegness – judges Doug Stacey, Andy Chambers

IYN main areas:

Leicester - 24
Loughborough - 30
Northampton - 13
North-East Lincolnshire - 11
Nottingham - 41

All entry forms are downloadable from our website

You can still enter the Best School Garden Special Award until the extended date of June 7th.



Sad news...

It is with great sadness that we have to inform you of the death of Kate Leather, who has judged the Children's Painting Competition for EMiB since the very early days, putting many hours of knowledge and experience into the detailed and positive comments that have always been a characteristic of her feedback to the children on their work. Frank and Mary Constable, Geoff Spate and Irene were all at the funeral and EMiB were pleased to send a floral tribute as well as our sincere condolences to John and the family on their sad loss.

Children's Competitions

We must also report that things do, of course, carry on; a new judge has been recruited – Wendy Tait – who will carry on Kate's work and is enthusiastically looking forward to a deluge of lovely paintings to comment upon, so do please encourage entries from schools and young people in your communities. This also applies, of course, to entries in the Digital Photography Competition, where Ashley Franklin is similarly hopeful of lots to view and assess. This year there is an option of electronically sending photos directly to Ashley's website.

The themes which will carry on through 2014, are:
"All Seasons in Bloom" (Children's Art Competition)
"Nature and Encouraging Wildlife in all Seasons" (Children's Digital Photography competition).
Rules and forms to both competitions can be found on our website.

So, to conclude on a positive note, I hope you have a summer that helps your community efforts to Bloom and that the judges and assessors reward you with the outcomes that you feel that your work deserves, and look forward to seeing as many of you as possible either at the EMiB Awards Ceremony at the Grosvenor Hotel in Skegness on September 11th, or at the various local IYN Awards events taking place in September and October.

Jeff

EMiB Diary Dates 2013

Fri 7th June Closing date for EMiB Best School Garden Entries

Fri 7th June Closing date for Children's Art Competition and Digital Photography Competition

Mon 1st – Fri 12th July EMiB Judging Period

Mon 1st – Wed 31st July

EMiB/RHS It's Your Neighbourhood assessment period

Wed 11th Sept EMiB Awards Presentation

Grosvenor Hotel, North Parade, Skegness, Lincolnshire PE25 2TE

Britain in Bloom Key Dates 2013

5 July Finalists' portfolios due

29th July-9th August

BIB judging fortnight

12 October Britain in Bloom Awards (Cleethorpes)

13 October Judges Surgeries (Cleethorpes)

November RHS Dig Together Day (date to be confirmed)

30 January 2014 Finalists' Seminar

Notable themes for 2013/14

- Edible Britain in Bloom
- (2014) Anniversary of first Britain in Bloom campaign